



HITS - Clays Express

- 12 Gauge Multi-Hull 12/2A Loaded for Clays
- Piston Skeet - a wad chosen by experts for difficult target shots.

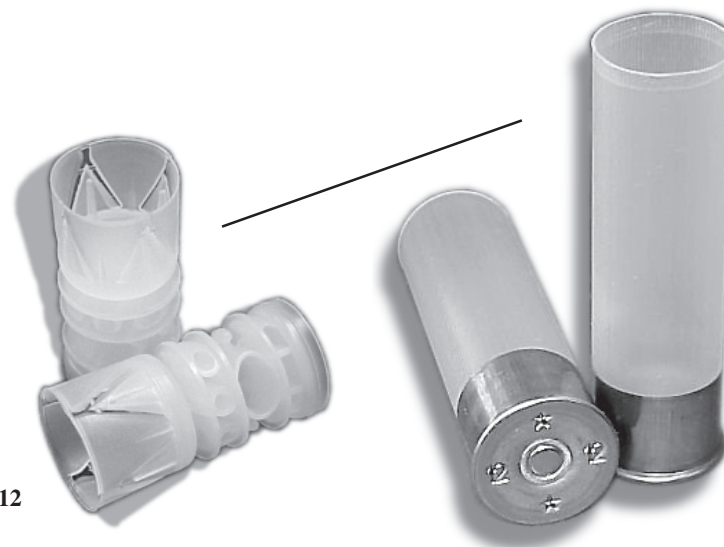
Editorial notes:

The Piston Skeet is a long-time favorite of Sporting Clays enthusiasts. The pattern disperses perfectly for crossing shots and the wad is suitable for most stations. Combined with one-ounce loads it is devastating!

The Multi-hulls, with a tapered edge (skived) crimp easily. On the first loading, give some extra time at the crimp start station to develop a memory in the plastic.

The G209 primers referred to in the data are the primers that come with the Multi-Hulls. A load using a CCI 209 primer is also listed. Tests demonstrate that the differences are slight.

The one-ounce load uses Alliant Red Dot powder instead of the Green Dot and calls for 1-ounce of pellets. This is a superb Skeet / Sporting clay recipe and we suggest you make up a few to try.



Piston Skeet 12

Key Components you will need:

- ✓ Multi-Hull 12/2A - 2-3/4" hulls
- ✓ Alliant Green Dot
- ✓ Piston Skeet

Recommended reading:
G/BP Sporting Clays

#12/2A Multi-Hulls with Piston Skeet Wads

	Ref. I.D.	GA	Length	Hull	Primer	Powder	Grains	Wad Info	Shot oz.	Type	Crimp	PSI	Vel Fps
	20030912	12	2-3/4"	12/2A	G209	GREENDOT	21.0	PISTON SKEET 12 #072PISK	1-1/8	Lead	FOLD	9500	1225
Load Options below													
<i>CCI Primer</i>	20030912	12	2-3/4"	12/2A	CCI209	GREENDOT	21.0	PISTON SKEET 12 #072PISK	1-1/8	Lead	FOLD	9500	1220
<i>Velocity</i>	20030917	12	2-3/4"	12/2A	G209	GREENDOT	22.5	PISTON SKEET 12 #072PISK	1-1/8	Lead	FOLD	9700	1266
<i>1-oz. Velocity</i>	20030912	12	2-3/4"	12/2A	CCI209	REDDOT	19.0	PISTON SKEET 12 #072PISK	1oz	Lead	FOLD	9500	1310

Reloading (subsequent firing) notes:

Select a load with a recommended primer.

Warning: Where data contained on this label and in catalogs and booklets list specific components; no changes or substitutions for these components can be made, except substitutions of shot sizes that will equate to exactly the same weight charge listed, without risking significant changes in the level of ballistic performance and/or safety of the loads shown. Follow loading data exactly and do not substitute components. We make no warranties, express or implied; limited or full; specifically disclaim any and all warranties of fitness for particular purpose and merchantability; and specifically disclaim any and all liability for consequential damages of any kind whatsoever. Failure to comply with standardized warnings of reloading; lead and all other pellet types; dram equivalence; powder and primer storage and measurement; component applications and the safe and appropriated use of firearms per se or the use published data exactly as shown may result in accidents with serious injury and/or death to the shooter and/or bystanders.

Copyright © 2003 Ballistic Products Inc. 20015 75th Avenue North, Corcoran MN USA. All rights reserved.

#12.122a.031203 - replaces all previous data.